

Name of work : Installation of oxygen Plant at Govt Medical College, Kalamassery (SH-Civil, Electrical & Plumbing works)

INKEL LIMITED

Door No. 7/473ZA – 5 & 6, 2nd Floor, Ajiyal Complex,
Kakkanad, Cochin – 682030
(Phone: 0484 - 2978101)

No. NIQ/INKEL/EKM/2020-21/141

Date: 8th January 2021

NOTICE INVITING QUOTATION

Name of Work: Installation of oxygen Plant at Govt Medical College, Kalamassery (SH-Civil, Electrical & Plumbing works)

Sealed quotations are invited by INKEL Limited, having its registered office at Door No. 7/473ZA – 5 & 6, 2nd Floor, Ajiyal Complex, Kakkanad, Cochin 682030, for the above work so as to reach the undersigned on or before **13/01/2021** up to 2.30pm for carrying out the work listed below. The quotations received will be opened at 3.00pm on the same day. The rates quoted shall be final and all-inclusive except GST. GST shall be paid extra over the quoted amount.

Specific Conditions

1. Eligibility Criteria

The intending bidders should have completed at least one work of similar nature costing not less than Rs. 3,00,000/- (Three lakh only) within last 3 years. Certificates to this effect from the competent authority /undertaking are to be enclosed with the quotation.

2. Issue Of Quotation

The intending bidder, who has the requisite experience in this field, can obtain the quotation formats from INKEL Office on any working day between 10am & 4pm up to 12/01/2021, free of cost. Quotation formats can also be downloaded from our website www.inkel.in

3. Item Rate Contract

This work shall be an Item rate contract excluding GST. GST shall be paid extra over the quoted rates. The contractor shall carry out the works as per the standard specifications & as per the instructions of the Engineer in charge.

4. Location of Site – Government Medical College, Kalamassery

5. The intending bidders should visit the site before submission of quotation. For site visit, contact Ph-9619129903

6. The successful bidder has to sign an agreement with M/s INKEL Limited on non-judicial stamp paper worth Rs.200/- within 7 days of receipt of the acceptance letter.

7. Performance Guarantee

Name of work : Installation of oxygen Plant at Govt Medical College, Kalamassery (SH-Civil, Electrical & Plumbing works)

7.1 The successful bidder within 7 days of receipt of the acceptance letter is required to submit an irrevocable Performance Guarantee of 5% of the total quoted amount in the form of DD/BG in favour of M/s INKEL Limited, payable at Cochin –682030. The performance guarantee shall be released upon completion of work.

7.2 The performance guarantee will be refunded after recording of the completion certificate of the work by the Engineer-in-charge.

8 Security deposit amount

A security deposit / retention amount at the rate of 2.5% of the value of work shall be deducted from the running bills and which shall be released upon completion of defects liability period.

9 Period Of Construction

The period of contract shall be **15 days**. Commencement of the work shall be considered from the 7th day of receipt of acceptance letter.

10 All Inclusive Rates

The contractor's rate must be firm and include the cost of transportation, loading/unloading of materials to the site, statutory levies & applicable cess etc. and the fixing or placing in position for which the item of work is intended to be operated. **The rates quoted by the contractor shall be firm throughout the contract period and there shall be no upward revision of the rates quoted by the contractor for any reasons whatsoever.**

11 Compensation For Delay

10.1 A penalty of INR 1000/ day shall be withheld from the contractor for delay in completion of work. The withheld amount shall be released if the completion of whole of works is finished as per the above period of completion.

10.2 However, the total compensation for delay deductible against Liquidated Damages (LD) whether for non-achievement of milestone or for final completion shall not exceed 10% of the contract value.

12 INKEL Limited reserves the right to rescind the contract if the contractor fails to start the work within 1/8th of stipulated time or fails to complete the work within the stipulated time, after serving 7 days notice to this effect by INKEL Limited and the balance works will be executed at the risk and cost of the contractor.

13 Defects Liability Period

Any defect developed within the Defect Liability Period of twelve months will have to be rectified by the contractor at their own cost and in case the defects are not rectified by the contractor, INKEL or its authorized representative shall get the work done at the risk and cost of the contractor.

Name of work : Installation of oxygen Plant at Govt Medical College, Kalamassery (SH-Civil, Electrical & Plumbing works)

14 Co-Ordination Of Work

The contractor must co-ordinate with other contractors involved in other related works within the site to minimize the disruption of continuous works.

15 Statutory Payments

Taxes / statutory levies applicable to this contract will be deducted from each successive running bills and the final bill, as per the provisions in the act.

16 Water And Electricity

The contractor shall make his own arrangement for water and electricity required for the work. INKEL shall take no responsibility for the supply of either electricity or water.

17 Employment Card

The Contractor shall issue an employment card to each worker on the day of work or entry into his employment. If a worker has already any such card with him issued by the previous employer, the contractor shall merely endorse that Employment Card with relevant entries. On termination of Employment, the Employment Card shall again be endorsed by the contractor and returned to the worker.

18 Register Of Workmen

A register of workmen shall be maintained in the form appended to these regulations and kept at the work site or as near to it as possible, and the relevant particulars of every workman shall be entered therein within THREE days of his employment.

19 ESI / EPF Documents

Along with each running bill, the contractor shall also submit ECR Chellan copy along with a copy of muster roll certified by concerned PM on monthly basis to INKEL Limited

20 Payment terms

20.1 No advance payment shall be made. Monthly bills based on the progress of work and as certified by Project Manager/Engineer- in charge

20.2 All payments will be processed within 15 days of certification of correct invoice and bill, along with the payment certificate issued by Engineer in charge.

20.3 Final payment shall be at the end of the contract period based on the successful completion of work and as certified by Engineer in charge.

Authorized Signatory
INKEL Limited
Cochin -682030

OXYGEN GENERATION PLANT

DRG. NO.MED/I

LOC : PARIYARAM

DEALT :

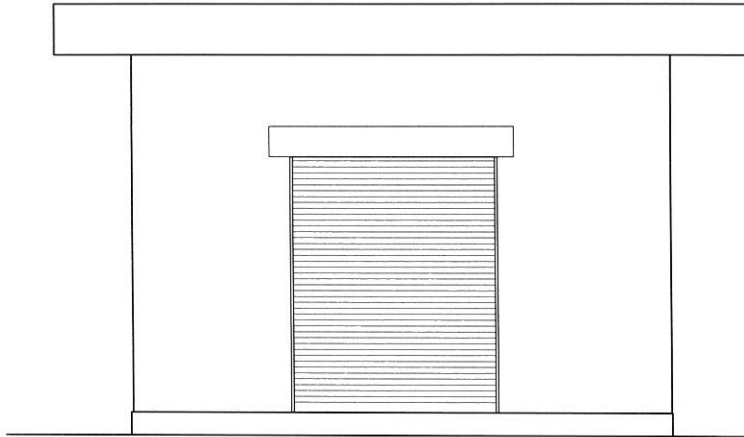


SCALE I:100

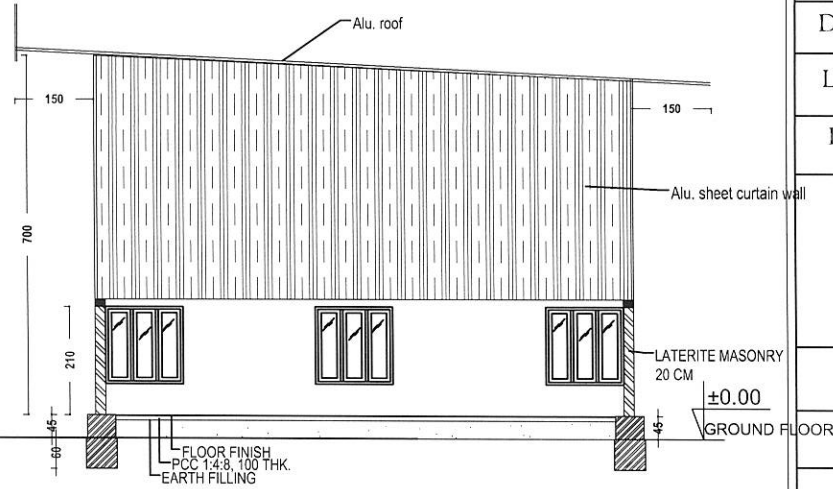
DATE : 9- NOV -2020

INDEX

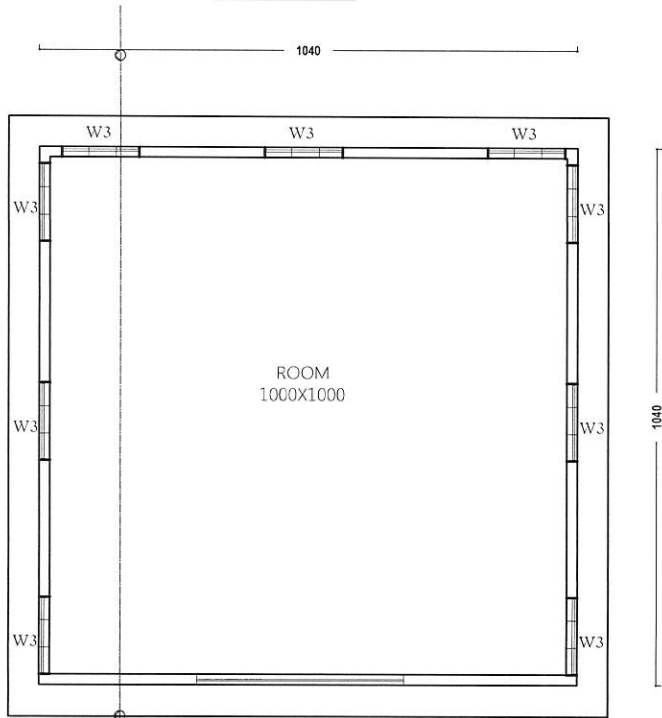
RS	ROLLING SHUTTER	400X500
W	WINDOW	150X130



ELEVATION



SECTION



GROUND FLOOR PLAN

PLAN AND DETAILS OF OXYGEN GENERATION PLANT AT G.M.C. KANNUR, PARIYARAM

DIST.NIRMITHI KENDRA

KANNUR



SCHEDULE OF QUANTITIES

Sl. No.	Item Description	Quantity	Units	Rate	Amount
1	CIVIL WORKS				
1.01	15.3 : Demolishing R.C.C. work manually / by mechanical means including stacking of steel bars and disposal of unserviceable material with in 50 metres lead as per direction of Engineer -in-Charge.	2.00	cum		
1.02	15.7.4 : Demolishing brick work manually / by mechanical means including stacking of serviceable material and disposal of unserviceable material within 50 metres lead as per direction of Engineer-in-Charge.In cement mortar	14.00	cum		
1.03	15.23.1 : Dismantling tile work in floors and roofs laid in cement mortar including stacking material within 50 metres lead.For thickness of tiles 10 mm to 25 mm	63.00	sqm		
1.04	15.13.1 : Taking out doors, windows and clerestory window shutters (steel or wood) including stacking within 50 metres lead:Of area 3 sq. metes and below	5.00	each		
1.05	15.18 : Dismantling steel work in built up sections in angles, tees, flats and channels including all gusset plates,boltd, nuts, cutting rivets, welding etc. including dismembering and stacking within 50 metres lead.	150.00	kg		
1.06	15.28.1 : Dismantling roofing including ridges, hips, velleys and gutters etc., and stacking the material within 50 metres lead of :G.S. Sheet	47.00	sqm		
1.07	15.57 : Dismantling aluminium / Gypsum partitions, doors, windows, fixed glazing and false ceiling including disposal of unserviceable surplus material and stacking of serviceable material with in 50 metres lead as directed by Engineer - in-Charge	37.00	sqm		
1.08	15.60 : Disposal of building rubbish/ malba/ similar unserviceable, dismantled or waste materials by mechanical means, including loading, transporting, unloading to approved municipal dumping ground or as approved by Engineer-in-charge, beyond 50 m initial lead, for all leads including all lifts involved	18.00	cum		

Sl. No.	Item Description	Quantity	Units	Rate	Amount
1.09	50.6.1.5 : Solid block masonry using pre cast solid blocks (Factory made) of size 30x20x20cm or nearest available size confirming to IS 2185 Part I of 1979 for super structure up to floor two level thickness 20cm and above in: CM 1:6 (1 cement : 6 coarse sand) etc complete	4.00	cum		
1.10	9.48.2 : Providing and fixing M.S. Grills of required pattern in frames of windows etc. with M.S. flats, square or round bars etc. including priming coat with approved steel primer all complete.Fixed to openings/ wooden frames with rawl plugs screws etc	150.00	kg		
1.11	13.5.1 : 15 mm cement plaster on rough side of single or half brick wall of mix:1:4 (1 Cement : 4 coarse sand)	162.00	sqm		
1.12	13.43.1 : Applying one coat of water thinnable cement primer of approved brand and manufacture on wall surface:Water thinnable cement primer	184.00	sqm		
1.13	13.45.1 : Finishing walls with textured exterior pint of required shade:New work (Two or more coats applied @ 3.28 ltr/ 10 sqm) over and including priming coat of exterior primer applied @ 2.20 kg/ 10 sqm	37.00	sqm		
1.14	13.60.1 : Wall painting with acrylic emulsion paint of approved brand and manufacture to give an even shade:Two or more coats on new work	184.00	sqm		
1.15	13.61.1 : Painting with synthetic enamel paint of approved brand and manufacture to give an even shade:Two or more coats on new work	14.00	sqm		
1.16	11.3.1 : Cement concrete flooring 1:2:4 (1 cement : 2 coarse sand : 4 graded stone aggregate)finished with a floating coat of neat cement, including cement slurry, but excluding the cost of nosing of steps etc. complete.40 mm thick with 20 mm nominal size stone aggregate	8.00	sqm		
1.17	13.52.2 : Finishing with Epoxy paint (two or more coats) at all locations prepared and applied as per manufacturer's specifications including appropriate priming coat, preparation of surface, etc. complete.On concrete work	74.00	sqm		

Sl. No.	Item Description	Quantity	Units	Rate	Amount
1.18	10.5.1 : Providing and fixing 1 mm thick M.S. sheet door with frame of 40x40x6 mm angle iron and 3 mm M.S. gusset plates at the junctions and corners, all necessary fittings complete, including applying a priming coat of approved steel primer.Using M.S. angels 40x40x6 mm for diagonal braces	4.00	sqm		
1.19	10.6.2 : Supplying and fixing rolling shutters of approved make, made of required size M.S. laths, interlocked together through their entire length and jointed together at the end by end locks, mounted on specially designed pipe shaft with brackets, side guides and arrangements for inside and outside locking with push and pull operation complete, including the cost of providing and fixing necessary 27.5 cm long wire springs manufactured from high tensile steel wire of adequate strength conforming to IS: 4454 - part 1 and M.S. top cover of required thickness for rolling shutters.80x1.20 mm M.S. laths with 1.20 mm thick top cover	12.00	sqm		
1.20	10.7 : Providing and fixing ball bearing for rolling shutters.	2.00	no		
1.21	10.8.1 : Extra for providing mechanical device chain and crank operation for operating rolling shuttersExceeding 10.00 sqm and upto 16.80 sqm in the area	12.00	sqm		
2	ELECTRICAL				
2.01	1.10.3 : Wiring for light point/ fan point/ exhaust fan point/ call bell point with 1.5 sq.mm FRLS PVC insulated copper conductor single core cable in surface / recessed medium class PVC conduit, with modular switch, modular plate, suitable GI box and earthing the point with 1.5 sq.mm. FRLS PVC insulated copper conductor single core cable etc as required.Group C	8.00	point		
2.02	1.14.1 : Wiring for circuit/ submain wiring alongwith earth wire with the following sizes of FRLS PVC insulated copper conductor, single core cable in surface / recessed medium class PVC conduit as required2x1.5 sq.mm + 1x1.5 sq.mm earth wire	15.00	metre		

Sl. No.	Item Description	Quantity	Units	Rate	Amount
2.03	1.14.2 : Wiring for circuit/ submain wiring alongwith earth wire with the following sizes of FRLS PVC insulated copper conductor, single core cable in surface / recessed medium class PVC conduit as required 2X 2.5 sq. mm + 1 X 2.5 sq. mm earth wire	45.00	metre		
2.04	1.25 : Supplying and fixing two module stepped type electronic fan regulator on the existing modular plate switch box including connections but excluding modular plate etc. as required.	1.00	each		
2.05	1.32 : Supplying and fixing suitable size GI box with modular plate and cover in front on surface or in recess, including providing and fixing 6 pin 5/6 & 15/16 amps modular socket outlet and 15/16 amps modular switch, connection etc. as required.	4.00	each		
2.06	1.41 : Installation, testing and commissioning of pre - wired, fluorescent fitting/ compact fluorescent fitting of all types, complete with all accessories and tube etc. directly on ceiling/ wall, including connection with 1.5 sq.mm FRLS PVC insulated, copper conductor, single core cable and earthing etc. as required.	4.00	each		
2.07	1.44 : Installation, testing and commissioning of ceiling fan, including wiring the down rods of standard length (upto 30 cm) with 1.5 sq. mm FRLS PVC insulated, copper conductor, single core cable etc.as required.	1.00	no		
2.08	2.3.2 : Supplying and fixing following way, single pole and neutral, sheet steel, MCB distribution board, 240 V, on surface/ recess, complete with tinned copper bus bar, neutral bus bar, earth bar, din bar, interconnections, powder painted including earthing etc. as required. 8 way, Double door	1.00	each		
2.09	9.1.29 : Supplying and making end termination with brass compression gland and aluminium lugs for following size of PVC insulated and PVC sheathed / XLPE aluminium conductor cable of 1.1 KV grade as required. 3 1/2X 240 sq. mm (62mm)	2.00	set		
2.10	Supplying and making end termination with brass compression gland and aluminium lugs for following size of PVC insulated and PVC sheathed / XLPE aluminium conductor cable of 1.1 kV grade as required. 4cx4 sq mm	2.00	no		

Sl. No.	Item Description	Quantity	Units	Rate	Amount
2.11	Supply and fixing of Perforated Cable tray with all accessories including horizontal & vertical bends, reducers, Tees, cross over, suitable supports and brackets and other accessories as required confirming to IEC-61537. The Tray shall be galvanised for corrosion protection confirming to DIN EN 10346 / ISO 1461. The trays should be tested for a maximum safe working load of 150 Kgs with a span distance of 1.5 meters and the deflection should be within the limits as per standard. The safety factor shall be 1.7 times of the safe working load. 150 mm width X 60mm Height	25.00	metre		
2.12	Supply of the following size 1.1kV grade XLPE insulated PVC sheathed, armoured Aluminium conductor power cable confirming to IS 7098 (part 1) amended upto date. 3.5cx240sq.mm Al Cable	85.00	metre		
2.13	Supply of the following size 1.1kV grade XLPE insulated PVC sheathed, armoured Aluminium conductor power cable confirming to IS 7098 (part 1) amended upto date. 4x4sq.mm Al Cable	50.00	metre		
2.14	Supply of Linear Surface Mounted LED Batten with a nominal system lumen output of 2000 lumens. System wattage should not exceed 20W. The luminaire shall have a rated system lifetime of 50,000 burning hours at 70. The luminaire should have a colour temperature of 6500K and CRI;80. Driver of the luminaire shall have THD 20% and PF 0.95. The heat sink should be made of Extruded thermal polycarbonate and the luminaire optics shall have a high efficiency PC diffuser. The light fixture including driver shall comply to IEC and IS. Similar to Wipro Make Model No: LL20-221-XXX-65-NE GR or equivalent.	4.00	each		
2.15	Supplying of ceiling fan of 1200mm sweep, energy efficient 5 Star rated, BLDC motor, High Speed, high power factor above 0.95 including the down rod of standard length (upto 30 cm). Similar to CG make Energion HS or equivalent.	1.00	each		

Sl. No.	Item Description	Quantity	Units	Rate	Amount
2.16	Supply of heavy duty exhaust fan of 450mm sweep in the existing opening, including making good the damage, connection, testing, commissioning etc. as required, including all accessories as required for complete installation including shutter etc complete as required.(havells, TurboForce SP or equivalent)	2.00	each		
3	PLUMBING WORKS				
3.01	50.18.8.8.1 : Providing and fixing PVC pipes, fittings including fixing the pipe with clamps at 1.00 m spacing. This includes jointing of pipes with one step PVC solvent cement and testing of joints complete as per direction of Engineer-in-Charge. Concealed work, including cutting chases and making good the wall etc. 75 mm pipe 6 Kgf/cm2	10.00	metre		
3.02	50.18.9.18.1 : Providing and fixing PVC pipes including fixing the pipe with clamps/clips at 1.00 m spacing. This included jointing of pipes with one step PVC solvent cement and testing of joints complete as per direction of Engineer-in-Charge 75 mm dia 6Kgf/cm2 - External work- Exposed on wall	5.00	metre		
3.03	uPVC fabricated Multi floor trap - Providing, Fixing, testing and commissioning at site in position uPVC Fabricated Multi Floor Trap, with thrust block support including complete cost of cutting chases and making good the walls in all respects - 50/75 mm dia inlet/outlet (In Sunken)	4.00	each		
3.04	C.P. cast brass or stainless steel Square Flat cut lock anti cockroach grating cover - Providing and Fixing Heavy Duty Stainless Steel Square Flat cut lock anti Cockroach Trap Stainless Steel A ISI 304 with 125x125 mm. Grating, for 110mm. Floor Traps.	4.00	each		
	TOTAL				